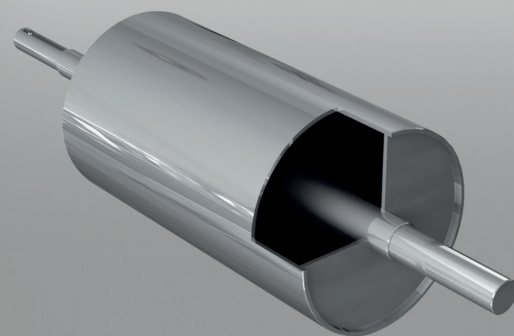


CHIAVETTA UNI 6607



TAMBURI DI COMANDO ASSE SALDATO - WELDED SHAFT DRIVE DRUMS

| CODICE CODE | B    | L    | T    | d   | da  | D   | de | I   | C   | N    |
|-------------|------|------|------|-----|-----|-----|----|-----|-----|------|
| TC001       | 700  | 440  | 400  | 35  | 40  | 215 | 30 | 90  | 100 | 300  |
| TC002       | 800  | 540  | 500  | 40  | 45  | 240 | 35 | 95  | 105 | 400  |
| TC003       |      |      |      |     |     | 215 |    |     |     | 450  |
| TC004       | 850  | 590  | 550  | 45  | 50  | 240 | 40 | 110 | 120 | 500  |
| TC005       |      |      |      |     |     | 215 |    |     |     | 500  |
| TC006       | 900  | 640  | 600  | 50  | 55  | 240 | 45 | 120 | 130 | 600  |
| TC007       |      |      |      |     |     | 320 |    |     |     | 650  |
| TC008       | 1000 | 740  | 700  | 60  | 65  | 240 | 55 | 140 | 150 | 800  |
| TC009       |      |      |      |     |     | 320 |    |     |     | 900  |
| TC010       | 1100 | 790  | 750  | 75  | 80  | 400 | 70 | 170 | 180 | 1000 |
| TC011       |      |      |      |     |     | 320 |    |     |     | 1200 |
| TC012       | 1200 | 890  | 850  | 85  | 90  | 240 | 80 | 200 | 210 | 1400 |
| TC013       |      |      |      |     |     | 320 |    |     |     | 1400 |
| TC014       | 1300 | 990  | 950  | 90  | 95  | 400 | 85 | 200 | 210 | 1400 |
| TC015       |      |      |      |     |     | 320 |    |     |     | 1500 |
| TC016       | 1450 | 1090 | 1050 | 95  | 100 | 400 | 85 | 200 | 210 | 1400 |
| TC017       |      |      |      |     |     | 500 |    |     |     | 1500 |
| TC018       | 1500 | 1190 | 1150 | 100 | 105 | 400 | 85 | 200 | 210 | 1400 |
| TC019       |      |      |      |     |     | 500 |    |     |     | 1500 |
| TC020       | 1750 | 1440 | 1400 | 105 | 110 | 400 | 85 | 200 | 210 | 1400 |
| TC021       |      |      |      |     |     | 500 |    |     |     | 1500 |
| TC022       | 1950 | 1640 | 1600 | 110 | 115 | 400 | 85 | 200 | 210 | 1400 |
| TC023       |      |      |      |     |     | 500 |    |     |     | 1500 |

#### DESCRIZIONE PRODOTTO

I tamburi di comando a forte spessore sono leggermente bombati per favorire il centraggio del nastro.  
Oltre alle misure standard sopra indicate, vengono costruiti tamburi a disegno e rivestimenti in gomma liscia o scanalata.

#### PRODUCT DESCRIPTION

These heavy-gauge drive drums are slightly convex to encourage centring of the belt.  
In addition to the standard sizes indicated above, drums can be made to measure and with smooth or grooved rubber.